

CATALOGUE

Tipping Machine



ITG Group in numbers

+50 years

Of experience in the
Textile Industry

7

National Divisions

**+50 sales
agents**

In Europe, Asia
and the Middle East

**+100
employees**

Worldwide

+10,000

Textile Products

**+2,000
customers**

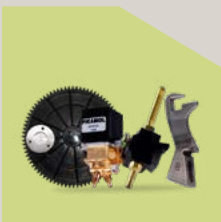
Worldwide

5

Business Lines

Bussines Lines

ITG Group operates in different business lines, which include: spare parts for circular knitting and weaving, textile accessories, and new and semi-new machines for circular knitting and flat weaving.



Spare Part &
Accessories For
Weaving



Spare Parts &
Accessories For
Circular Knitting



Buy-Sell Second-Hand
Machinery



Textil
Machinery



Braiding &
High-speed Label
Looms

Weaving Success Together

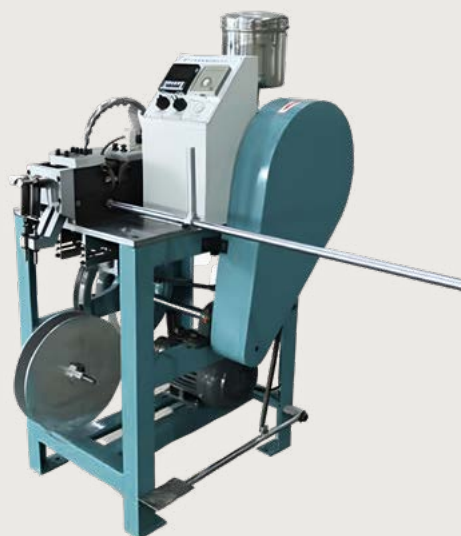
ITG Group, every thread of our international team always at your service.

Semi-automatic tipping machine

HH MODEL

CHARACTERISTICS

Type	Tipping machine for plain film without logo for shoelace.
Length	Any
Production	Close to automatic after worker's experience.
Size	950x780x1330mm
Weight	230kg
Motor	0.75kw



HH-TE MODEL

CHARACTERISTICS

Type	Tipping machine for plain film with logo or punched film for handle rope.
Length	Any
Production	Close to automatic after worker's experience.
Size	950x780x1330mm
Weight	260kg
Motor	0.75kw

Automatic tipping machine



HH-T-100 MODEL

CHARACTERISTICS

Type	Tipping machine for plain film without logo for shoelace, plain film with logo or punched film for handle rope; and punched film for handle rope.
Tipping	For tipping 0.35-0.9 meters cords.
Length	35 cm - 270 cm
Production	Close to automatic after worker's experience.
Output	4000pcs-6000pcs/hour
Size	1890x1240x1680 mm
Weight	350kg
Motor	1.85kw

HH-T-160 MODEL

CHARACTERISTICS

Type	Tipping machine for plain film without logo for shoelace, plain film with logo or punched film for handle rope; and punched film for handle rope.
Tipping	For tipping 0.35-1.5 meters cords.
Length	35 cm - 270 cm
Production	Close to automatic after worker's experience.
Output	4000pcs-6000pcs/hour
Size	2300x1150x1680mm
Weight	470kg
Motor	1.85kw

HH-T-180 MODEL

CHARACTERISTICS

Type	Tipping machine for plain film without logo for shoelace, plain film with logo or punched film for handle rope; and punched film for handle rope.
Tipping	For tipping 0.35-1.7 meters cords.
Length	35 cm - 270 cm
Production	Close to automatic after worker's experience.
Output	4000pcs-6000pcs/hour
Size	2650*1150*1700mm
Weight	470kg
Motor	1.85kw

HH-T-220 MODEL

CHARACTERISTICS

Type	Tipping machine for plain film without logo for shoelace, plain film with logo or punched film for handle rope; and punched film for handle rope.
Tipping	For tipping 0.4-2.1 meters cords.
Length	35 cm - 270 cm
Production	Close to automatic after worker's experience.
Output	4000pcs-6000pcs/hour
Size	3300x1180x1700mm
Weight	500kg
Motor	2.1kw

HH-T-280 MODEL

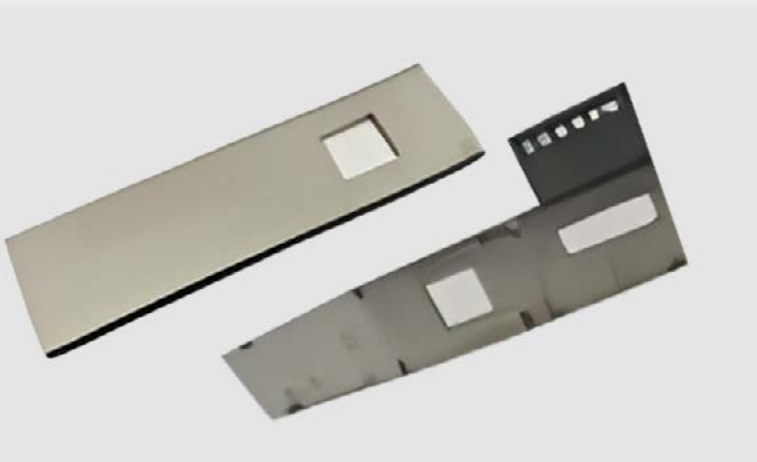
CHARACTERISTICS

Type	Tipping machine for plain film without logo for shoelace, plain film with logo or punched film for handle rope; and punched film for handle rope.
Tipping	For tipping 0.4-2.7 meters cords.
Length	35 cm - 270 cm
Production	Close to automatic after worker's experience.
Output	4000pcs-6000pcs/hour
Size	4000x1180x1700mm
Weight	520kg
Motor	2.1kw

Cutting Die

CHARACTERISTICS

Size	2.0mm to 5.0mm
	*Different sizes, depend on the cords



Film Feeder

CHARACTERISTICS

Size	Depend on the film width.
-------------	---------------------------

For a customized quotation,
please contact your sales representative

cn.sales@group-itg.com

ITG GROUP DIVISIONS

ITG Argentina - Quilmes

I.T.G. S.R.L.

Avenida La Plata N° 2986,
Quilmes, Buenos Aires,
Argentina.
Tel: 0054 11 4200 3391
ar.comercial@group-itg.com

ITG Argentina - Lujan

I.T.G. S.R.L.

Tropero Moreira N° 443, Lujan,
Buenos Aires, Argentina.
Tel: 0054 11 31783223
0054 2323 597005
ar.comercial@group-itg.com

ITG Brazil - São Paulo

Giamminola do Brasil Ltda.

Rua Sergipe, 45 Jardim Colina
Americana, SP – Brazil
CEP 13478-295
Tel: +55 (19) 3478-8844
br.comercial@group-itg.com

ITG Brazil - Sta Catarina

Giamminola do Brasil Ltda.

Rua Ludovico Merico, 120
Dom Joaquim Brusque,
SC - Brazil. CEP 88359-240
Tel: +55 (47) 3350-6683
br.comercial@group-itg.com

ITG China

Giamminola Shanghai Co. Ltd.
Room 101, Block C2
6000 Shenzhuangong Rd.
Songjiang District – Shanghai
201619 - China
Tel: +86 (21) 67855000
cn.sales@group-itg.com

ITG Italia

Giorgio Giamminola & C. Srl
Via Cantoniga 11
22100 Como
Italy
Tel: +39 (031) 507979
it.info@group-itg.com

ITG Mexico - Puebla

ITG México S.A. de C.V.
Calle Malintzi 111.
Colonia Malintzi 72210 Puebla,
Pue. México
Tel: +52 (22) 222 23003
mx.comercial@group-itg.com

ITG Mexico - Bajío

ITG México S.A. de C.V.
Calle Aldama 804 Col.
Cuauhtemoc Centro C.P. 36310
San Francisco del Rincón, Gto.
Tel: +52 476 587 7493
mx.comercial@group-itg.com

ITG Perú

ITG Group Perú Division S.A.C.
Calle Pumacurco 277 - Dpto 3
San Miguel, Lima Perú.
Tel: +51 (1) 4642063
administracion@nuevaitgperu.com

ITG Colombia

ITG Colombia S.A.S.
Carrera 49 N. 61 Sur 68 L-102
Av. Regional - Centro Ejecutivo
Sabana – Sabaneta Antioquia
Colombia
Tel: +57 60 4 4445240
co.gerencia@group-itg.com



ITALCOLORE S.A.

Av. Flandes 1272 - Parque
Industrial Villa Flandria - Jáuregui
Luján - Pcia. de Bs. As. Argentina
Tel: +54 (02323) 497171
info@italcolore.com.ar



FILOTEX S.R.L.

Av. La Plata 2986, Quilmes
Oeste B1878FLQ
Buenos Aires, Argentina
Tel: +54 (11) 42003391
info@itgargentina.com.ar



ITG Energía S.A. de C.V.

Calle Malintzi 111
Colonia Malintzi 72210
Puebla, Pue. México
Tel: +52 (22) 222 23003 Ext. 110
mxe.comercial@group-itg.com
www.itgenergy.com.mx



FIND YOUR AGENT

Are you looking for an ITG
or an agency nearby your country?

Enter the contact section of our website
and select the country where you are
located.

www.group-itg.com/contact



The information contained in this catalogue is subject to change without notice. The contents of this document, product specifications and images are for illustrative purposes only.



CHINA DIVISION

Tel. 021 6785 5000

cn.sales@group-itg.com

www.group-itg.com

Room 101, Block C2 No. 6000 Shenzhuangong
Rd. Songjiang District Shanghai 201619 China.